

TUBULAR SENSORS

S50/S51

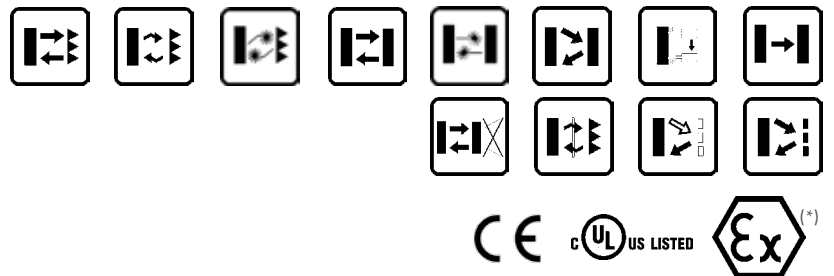
Extended range of standard "One for All" photoelectric tubular M18 sensors

- All optic functions and LASER models
- M18 flat plastic with universal mounting
- Available in M18 metal housing
- Axial or radial optics, cable or connector
- Standard 4-wire NO-NC NPN or PNP output



APPLICATIONS

- Processing and Packaging machinery
- Conveyor lines, material handling
- Ceramics intralogistics
- Automated warehousing



(*) Axial models.
ATEX II 3DG

S50/S51		
Through beam		0...20 m
Retroreflective (on R2 reflector)		0...60 m (class 1 LASER) (S50)
Polarized retroreflective		0,1...4 m
Retroreflective for transparent (on R2 reflector)		0,1...4 m (S50) 0,1...3 m (S51)
Diffuse proximity		0,1...16 m (class 1 LASER) (S50)
Fixed focus		0,1...1,3 m (S50)
Background suppression		short distance 0...100 mm
Through beam with fiber optic		medium distance 0...400 mm (S50) 0...450 mm (S51)
Diffuse proximity with fiber optic		long distance 0...700 mm
Contrast sensor		long distance LASER 0...350 mm
Luminescence sensor		100 mm (S50)
Power supply	Vdc	50...100 mm (S50)
	Vac	0...100 mm (S50)
	Vac/dc	0...30 mm (S50)
Output	PNP	10 ±2 mm
	NPN	0...20 mm
	NPN/PNP	10...30 V
	relay	
	other	
Connection	cable	
	connector	
	pig-tail	
Approximate dimensions (mm)		M18x 55/68
Housing material		PBT, nickel plated brass
Mechanical protection		IP67

TECHNICAL DATA

Power supply	10 ... 30 Vdc (limit values)
Ripple	2 Vpp max.
Consumption (output current excluded)	35 mA max. (mod. S50...A00/B01/C01/C10/C21/D00/E01/T01) 30 mA max. (mod. S50...F01/M03, S51...A00/B01/C01/C10/C20/F00) 25 mA max. (mod. S50...W03/U03)
Light emission	red LED 630 nm (mod. S50...D00/E01, S50-PA/MA...M03) red LED 660 nm (mod. S50...B01/T01, S51...B01) red LED 670 nm (mod. S50-PS/MS...M03) IR LED 880 nm (mod. S50/51...A00/C01/C10/C20/C21/G00) white LED 400-700 nm (mod. S50...W03) UV LED 370 nm (mod. S50...U03) red Laser 650 nm (mod. S50...G00/F01/B01/C01)
Setting	sensitivity trimmer (mod. B01/C01/C21/E01/F01/T01) teach-in push-button (mod. M03/W03/U03)
Operating mode	LIGHT mode on N.O. output / DARK mode on N.C. output (mod.S50...C01/C10/C21/D00/M03/U03) DARK mode on N.O. output / LIGHT mode on N.C. output (mod.S50...A00/B01/E01/F01/T01/W03) white wire or pin 2 connected to +10...30V LIGHT mode/ to 0V DARK mode (mod. S51) white wire or pin 2 not connected LIGHT mode (mod. S51...C01/C10/C20)/ DARK mode (mod. S51...A00/B01/F00)
Indicators	yellow OUTPUT LED (S50, S51, excl. mod. G00) green STABILITY LED (mod. S50...B01/C01/C21/E01/F01), POWER LED (mod. S50...G00, S51) green/red READY/ERROR LED (mod. S50...M03/W03/U03)
Output	PNP or NPN; NO; NC (mod. S50)
Output current	100 mA max.
Saturation voltage	2 V max.
Response time	0,5 ms (mod. S50...A00/B01/T01/C10/C21/C01/D00/E01/U03) 2 ms (mod. S50...F01/G00) 1 ms (mod. S50...M03, S51...A00/B01/C01/C10/G00) 4 ms (mod. S51...F00) 100 µs (mod. S50...W03) 333 µs (Laser mod. S50)
Switching frequency	1 kHz (mod. S50...A00/B01/T01/C10/C21/C01/D00/E01/U03) 250 Hz (mod. S50...F01/G00) 500 Hz (mod. S50...M03, S51...A00/B01/C01/C10/G00) 120 Hz (mod. S51...F00) 5 kHz (mod. S50...W03) 1,5 kHz (Laser mod. S50)
Connection	2 m cable Ø 4 mm, M12 4-pole connector
Dielectric strength	500 Vac, 1 min between electronics and housing
Insulating resistance	>20 MΩ, 500 Vdc between electronics and housing
Electrical protection	class 2
Mechanical protection	IP67
Ambient light rejection	according to EN 60947-5-2
Vibrations	0,5 mm amplitude, 10 ... 55 Hz frequency, for every axis (EN60068-2-6)
Shock resistance	11 ms (30 G) 6 shock for every axis (EN60068-2-27)
Housing material	Plastic version PBT Metal version nickel plated brass
Lens material	PMMA
Operating temperature	-25 ... 55 °C (Laser mod.) -10 ... 50 °C
Storage temperature	-25 ... 70 °C
Weight	Plastic version 75 g max. cable vers. (90 g max. mod. M03), 25 g max. conn. vers. (40 g max. mod. M03) Metal version 110 g max. cable vers. (125 g max. mod. M03), 60 g max. conn. vers. (75 g max. mod. M03)

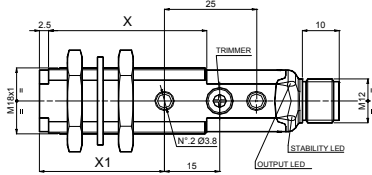
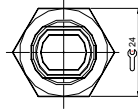
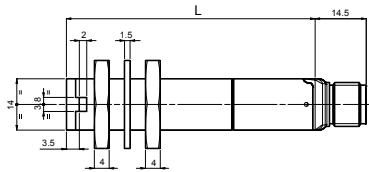
TUBULAR SENSORS

S50

DIMENSIONS

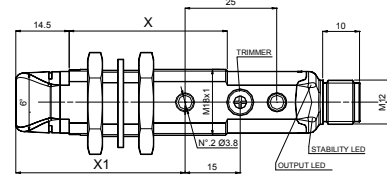
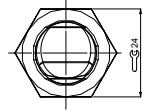
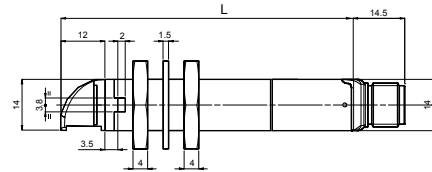
PLASTIC

AXIAL VERSION



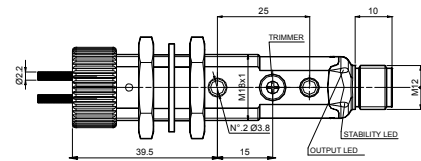
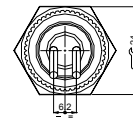
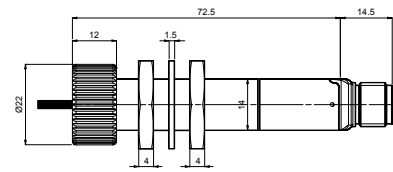
	MODELS	
	with trimmer	without trimmer
L	67	57
X	43	42
X1	34	24

RADIAL VERSION



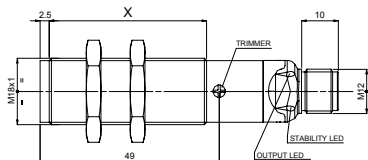
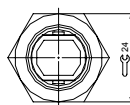
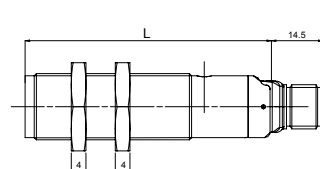
	MODELS	
	with trimmer	without trimmer
L	79	69
X	43	42
X1	46	36

FIBRE OPTIC VERSION



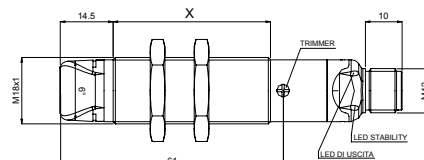
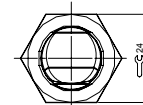
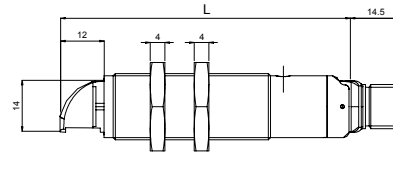
METAL

AXIAL VERSION



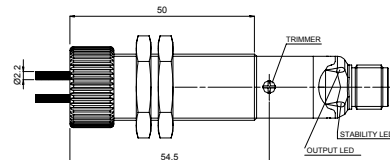
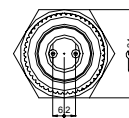
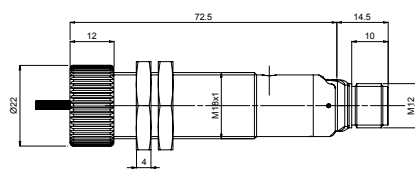
	MODELS	
	with trimmer	without trimmer
L	67	57
X	43	38

RADIAL VERSION



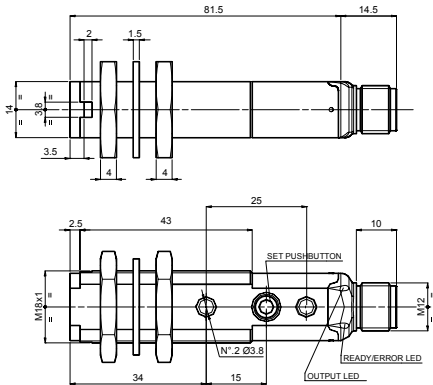
	MODELS	
	with trimmer	without trimmer
L	79	69
X	43	38

FIBRE OPTIC VERSION

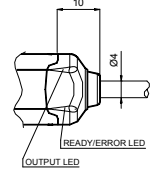


BACKGROUND SUPPRESSION AXIAL VERSION

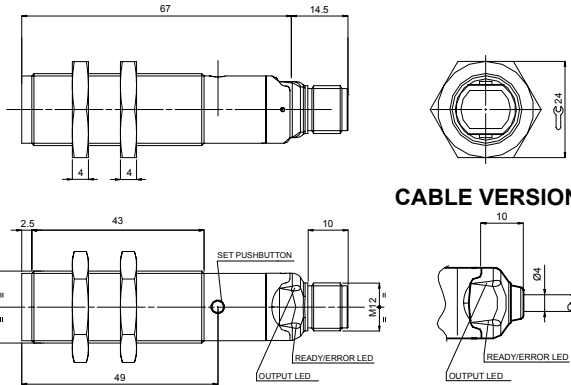
PLASTIC



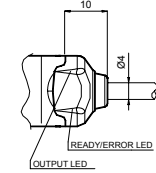
CABLE VERSION



METAL

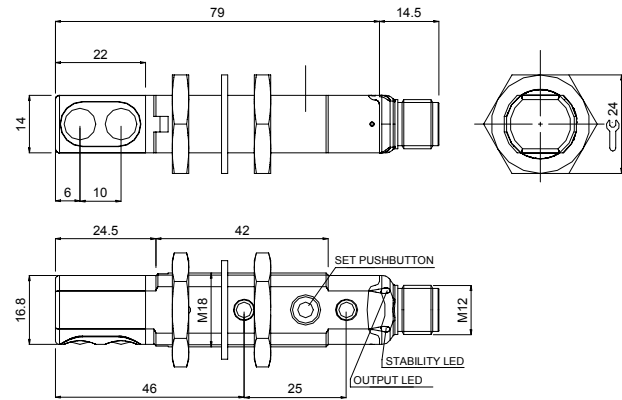


CABLE VERSION

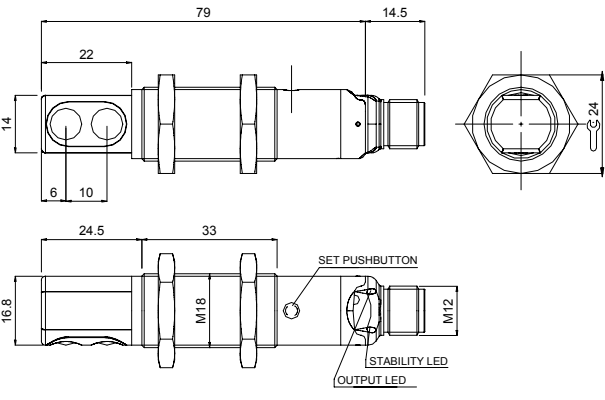


BACKGROUND SUPPRESSION RADIAL VERSION

PLASTIC

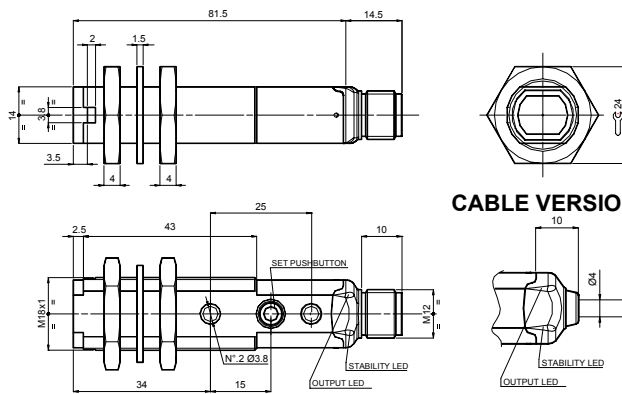


METAL

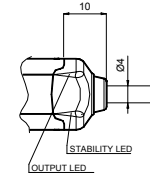


LUMINESCENCE AND CONTRAST

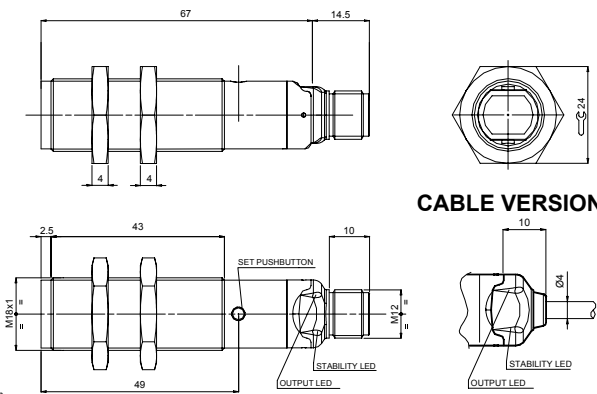
PLASTIC



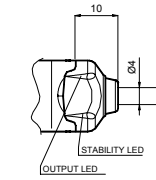
CABLE VERSION



METAL



CABLE VERSION



CONNECTIONS

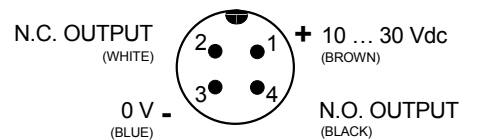
CABLE

Through beam emitter

BROWN	1	+	10 ... 30 Vdc
WHITE	2		N.C. OUTPUT
BLACK	4		N.O. OUTPUT
BLUE	3	-	0 V

BROWN	1	+	10 ... 30 Vdc
WHITE	2		TEST +
BLACK	4		TEST / NOT USED (Laser version)
BLUE	3	-	0 V

M12 CONNECTOR



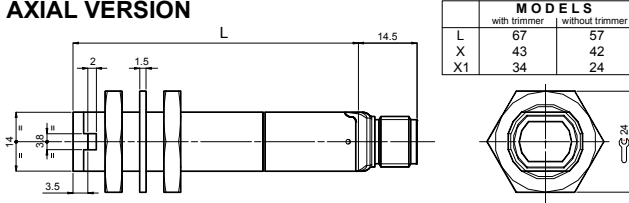
TUBULAR SENSORS

S51

DIMENSIONS

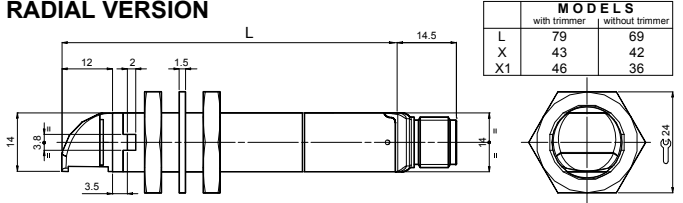
PLASTIC

AXIAL VERSION

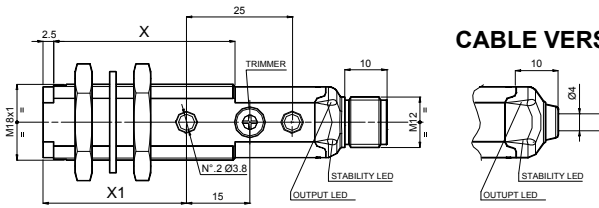


MODELS		
	with trimmer	without trimmer
L	67	57
X	43	42
X1	34	24

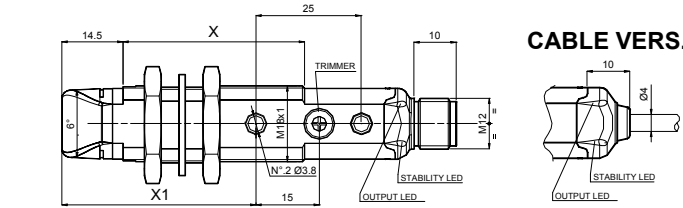
RADIAL VERSION



MODELS		
	with trimmer	without trimmer
L	79	69
X	43	42
X1	46	36

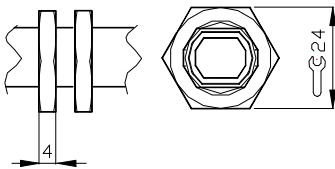


CABLE VERS.

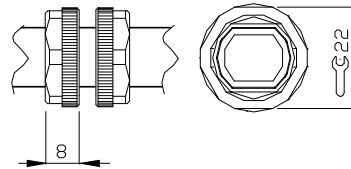


CABLE VERS.

CH.24 PLASTIC NUTS

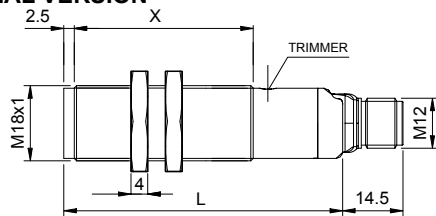


CH.22 PLASTIC NUTS



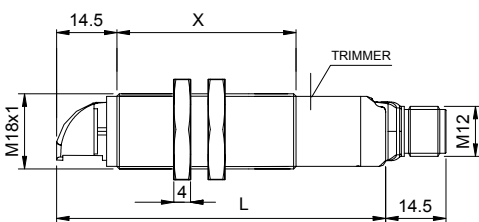
METAL

AXIAL VERSION



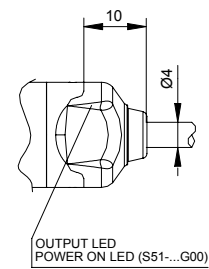
MODELS		
	B01/C01/F00	A00/C10/G00
L	67	57
X	43	38

RADIAL VERSION



MODELS		
	B01/C01/F00	A00/C10/G00
L	79	69
X	43	38

CABLE VERSION



CONNECTIONS

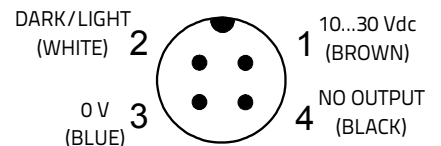
CABLE

BROWN	1	+	10 ... 30 Vdc
WHITE	2		DARK- / LIGHT+
BLACK	4		N.O. OUTPUT
BLUE	3	-	0 V

Through beam emitter

BROWN	1	+	10 ... 30 Vdc
WHITE	2		TEST +
BLACK	4		TEST -
BLUE	3	-	0 V

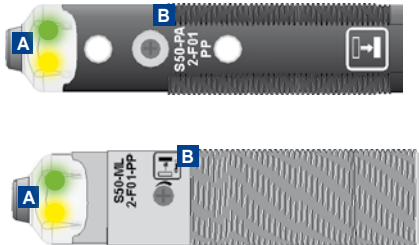
M12 CONNECTOR



S50/S51

INDICATORS AND SETTINGS

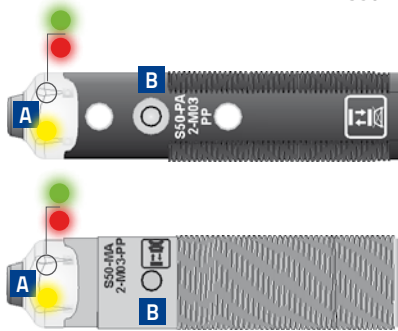
S50-XX...A00/B01/C01/C21/E01/F01/T01
S51-XX...B01/C01



- A** OUTPUT status LED Yellow
STABILITY LED Green (Only Receiver)
POWER ON LED Green (Only Emitter)
- B** Adjustment trimmer (receiver)

Single-turn trimmer for sensitivity adjustment. Rotate in a clockwise direction to increase the operating distance.

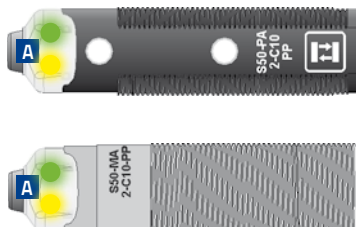
S50-XX-M03/W03/U03



- A** OUTPUT status LED Yellow
READY LED Green
ERROR LED Red
- B** Teach-in push-button

Teach-in button for setting.
EASYtouch™ provides two setting modes: standard or fine, both obtained by pressing the push-button only once.
Please refer to instructions manual for operating details.

S50-XX-C10
S51-XX-A00/C10/C20/F00/G00

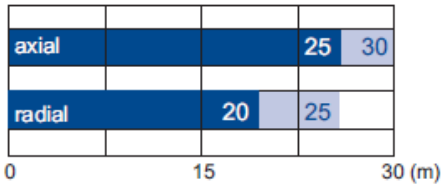


- A** A00/C10/C20/F00
OUTPUT status LED Yellow
STABILITY LED green
- G00
OUTPUT status LED yellow (Only Emitter G00)

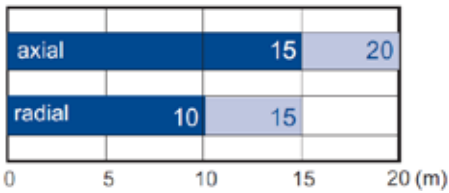
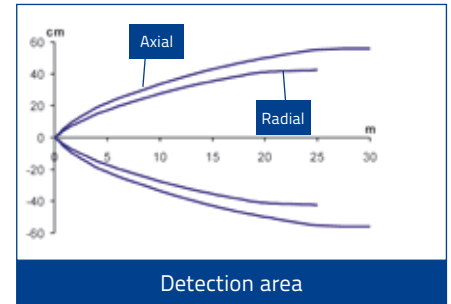
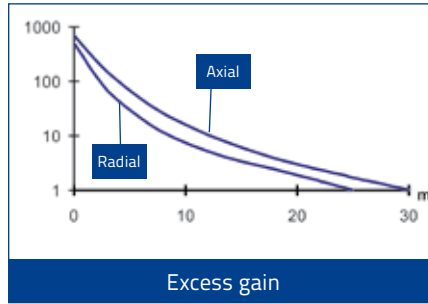
TUBULAR SENSORS

S50 DETECTION DIAGRAMS

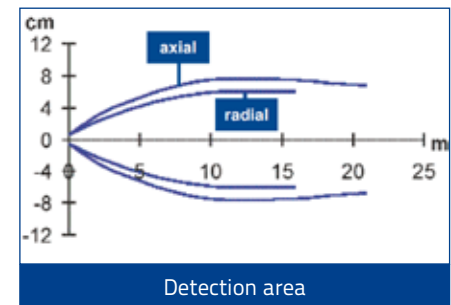
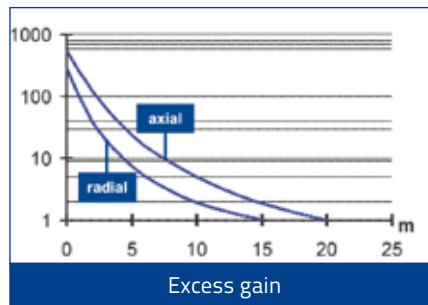
G/F INFRARED EMISSION



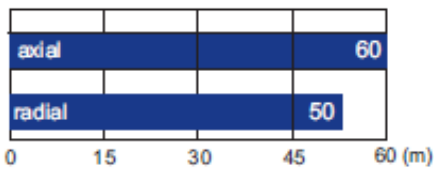
■ Recommended operating distance
 ■ Maximum operating distance



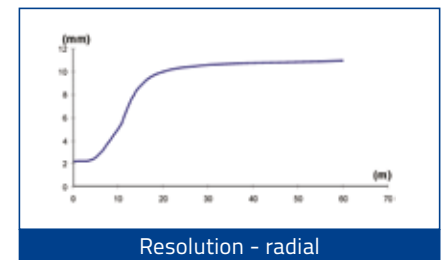
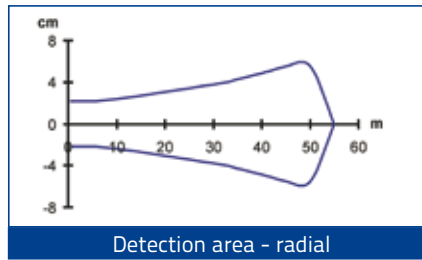
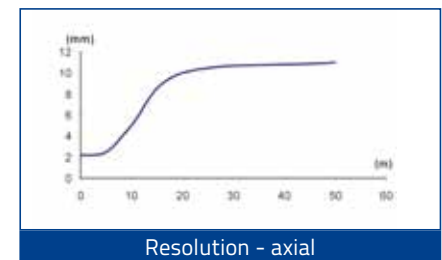
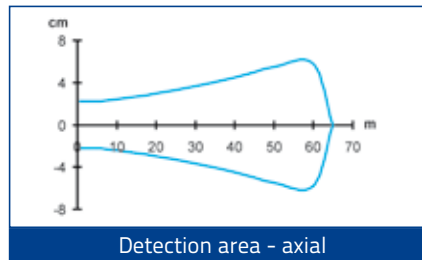
■ Recommended operating distance
 ■ Maximum operating distance



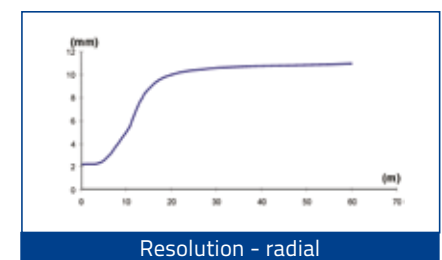
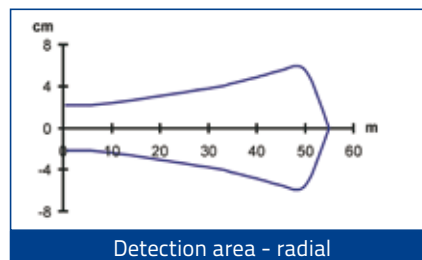
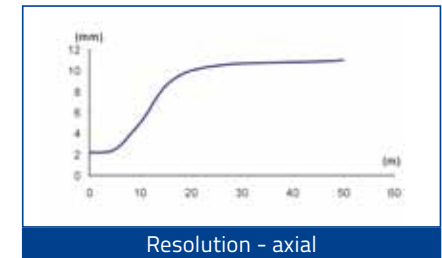
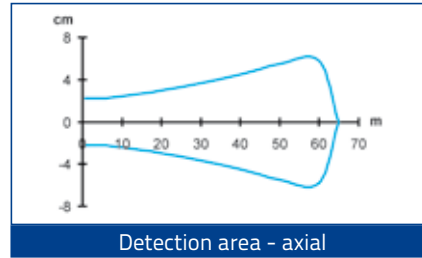
G/F LASER RED EMISSION



■ Operating distance



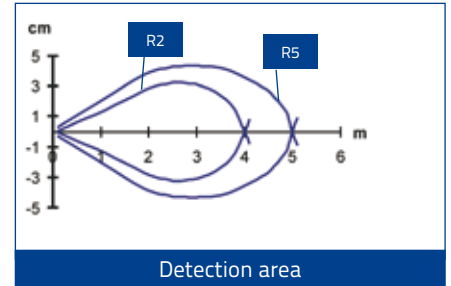
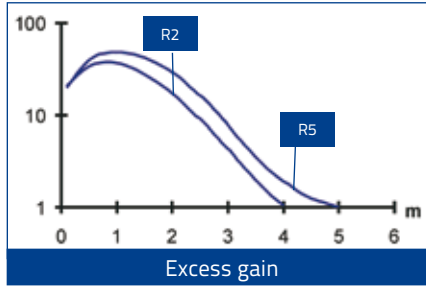
■ Operating distance



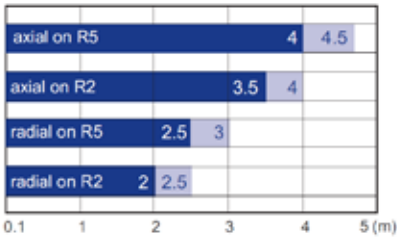
A INFRARED EMISSION



■ Operating distance

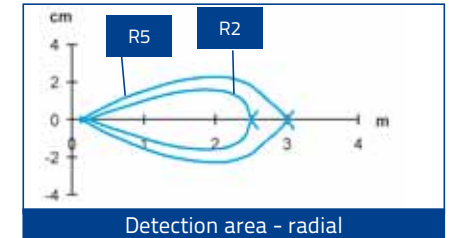
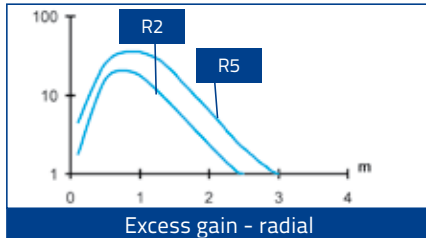
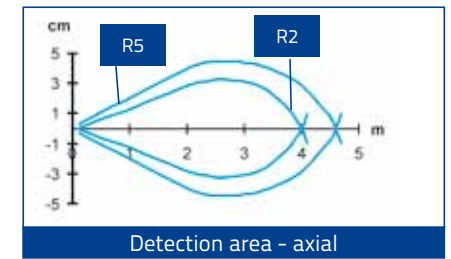
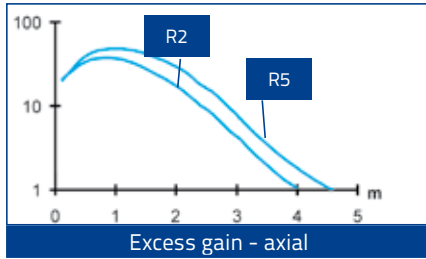


B INFRARED EMISSION

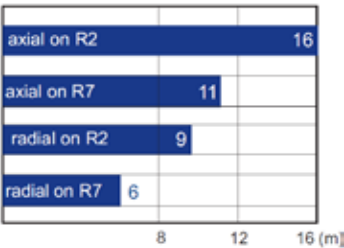


■ Recommended operating distance
 ■ Maximum operating distance

High efficiency reflectors can be used to obtain larger operating distances. Refer to **Reflectors (A.01)**.

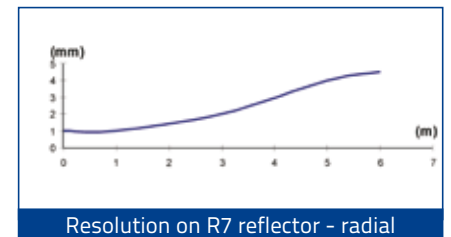
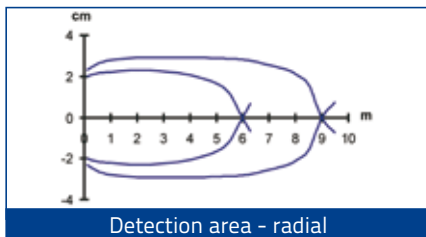
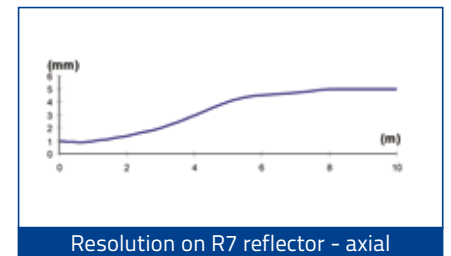
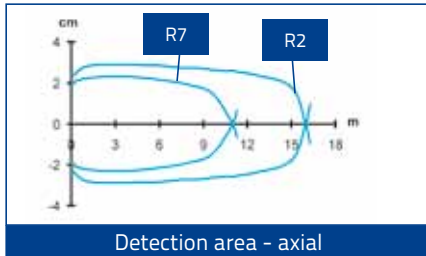


B LASER RED EMISSION

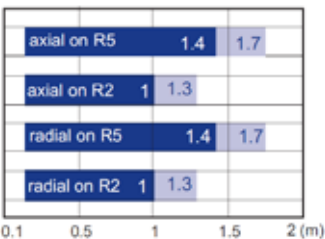


■ Operating distance

High efficiency reflectors can be used to obtain larger operating distances. Refer to **Reflectors (A.01)**.

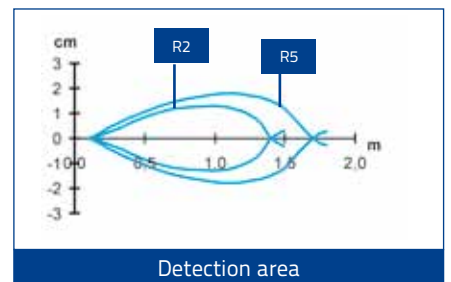
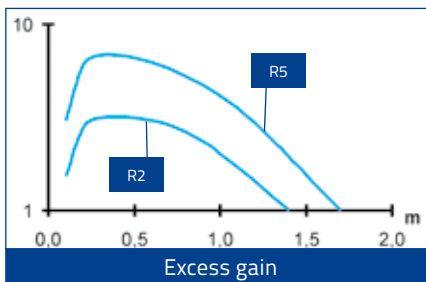


T RED EMISSION



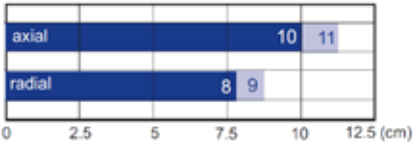
■ Recommended operating distance
 ■ Maximum operating distance

High efficiency reflectors can be used to obtain larger operating distances. Refer to **Reflectors**.

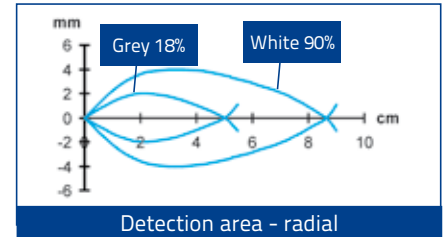
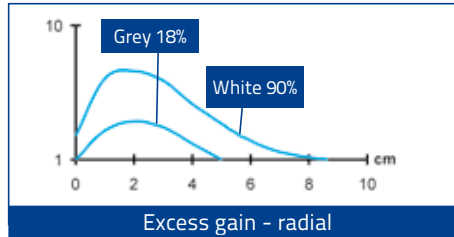
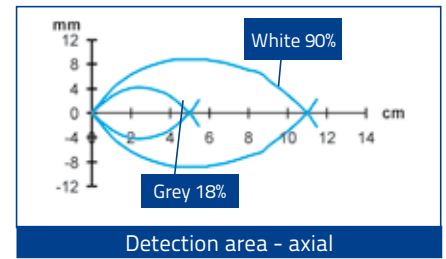
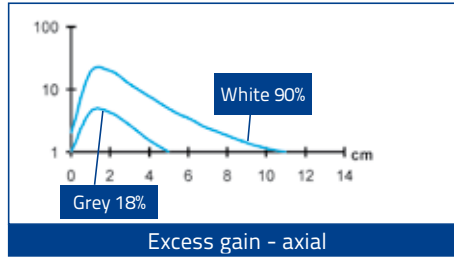


TUBULAR SENSORS

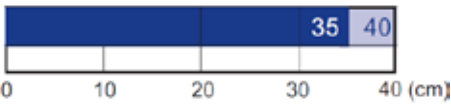
C SHORT INFRARED EMISSION



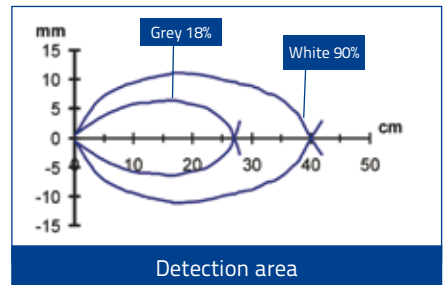
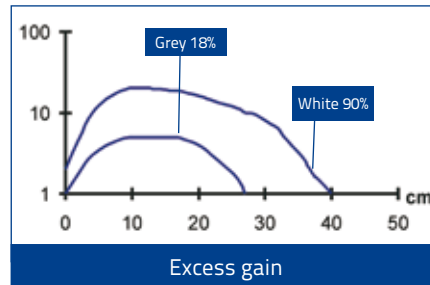
- Recommended operating distance
- Maximum operating distance



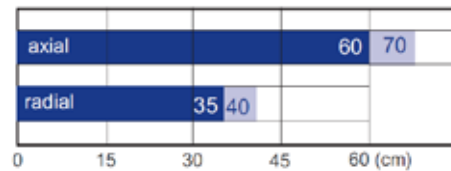
C MID INFRARED EMISSION



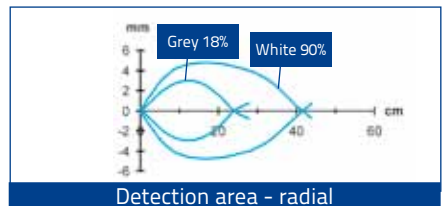
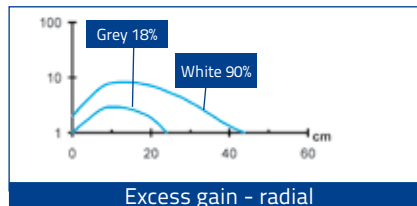
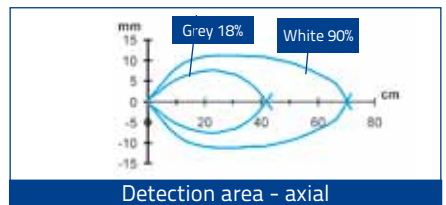
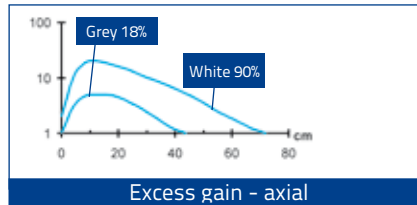
- Recommended operating distance
- Maximum operating distance



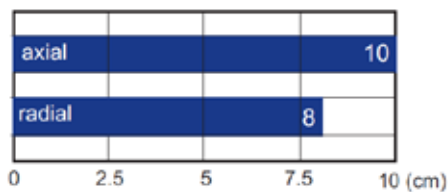
C LONG INFRARED EMISSION



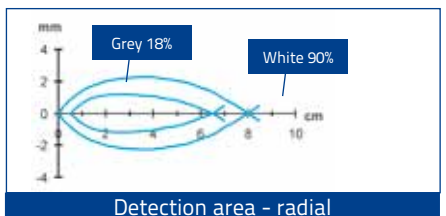
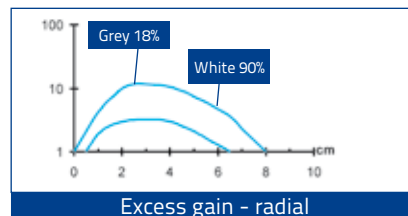
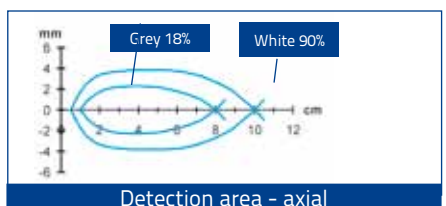
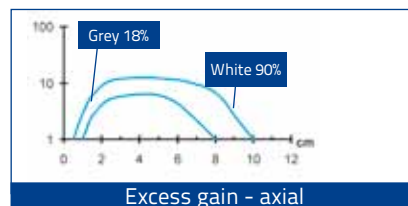
- Recommended operating distance
- Maximum operating distance



D RED EMISSION



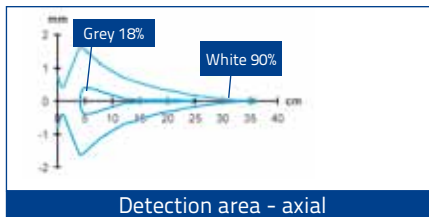
- Operating distance



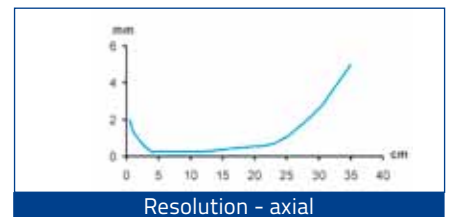
C LASER RED EMISSION



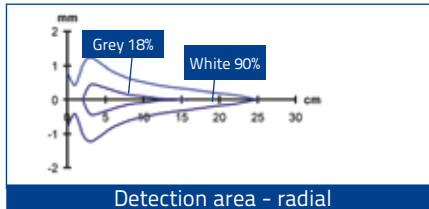
■ Operating distance



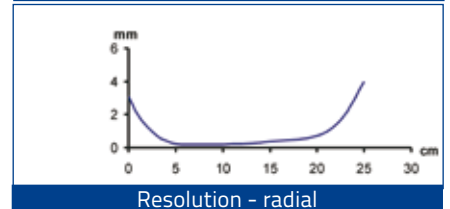
Detection area - axial



Resolution - axial

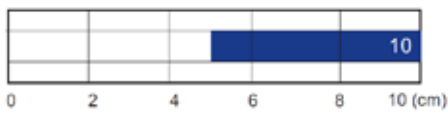


Detection area - radial

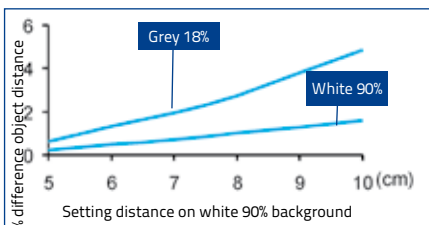


Resolution - radial

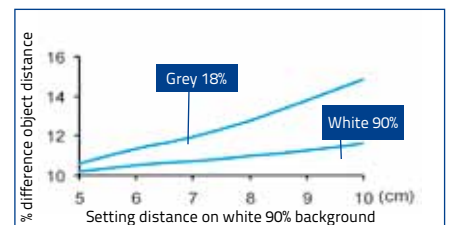
M AXIAL RED EMISSION



■ Operating distance

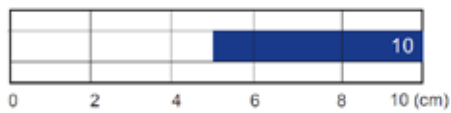


Detection difference with EASYtouch™ acquisition

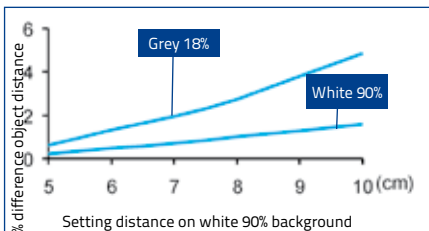


Detection difference with fine acquisition

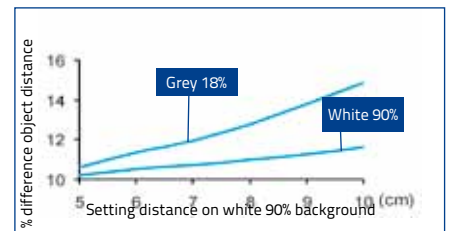
M RADIAL RED EMISSION



■ Operating distance

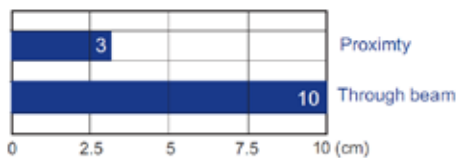


Detection difference with EASYtouch™ acquisition



Detection difference with fine acquisition

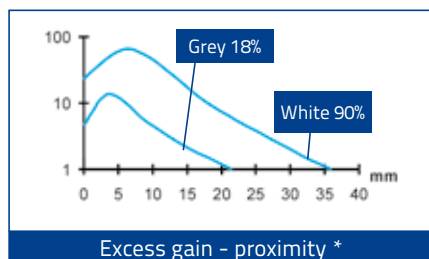
E RED EMISSION



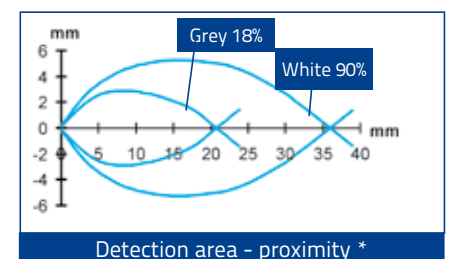
■ Operating distance with standard fibers

Standard Fiber-optics:
OF-42-ST-20 proximity
OF-43-ST-20 through beam

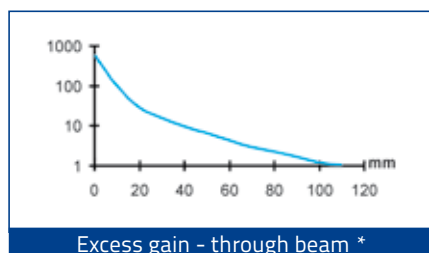
High efficiency fiber-optics or accessory lenses can be used to obtain larger operating distances. Refer to **Fiber-optics** of the **General Catalogue**



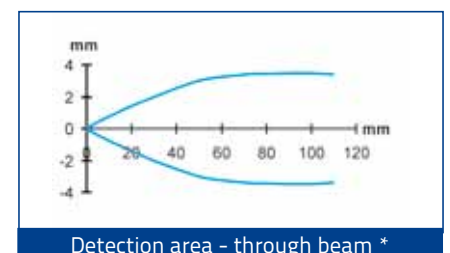
Excess gain - proximity *



Detection area - proximity *



Excess gain - through beam *

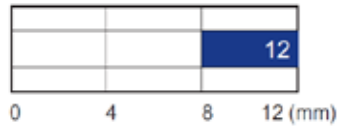


Detection area - through beam *

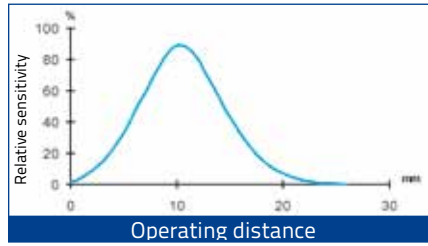
* standard Fiber-optics

TUBULAR SENSORS

W WHITE EMISSION



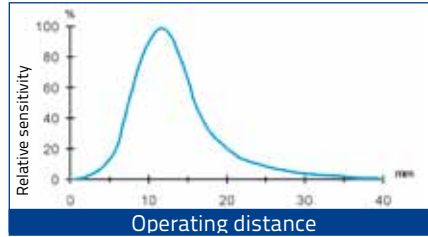
Operating distance



U UV EMISSION

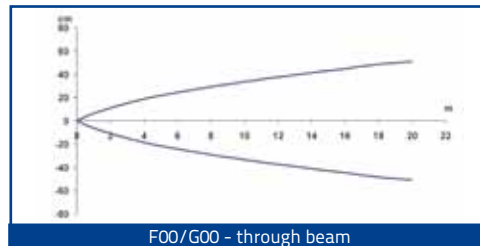
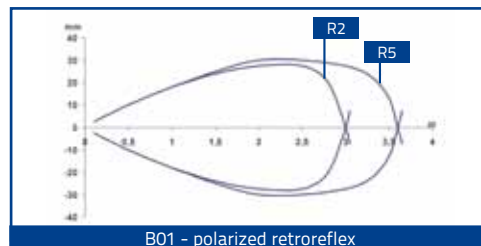
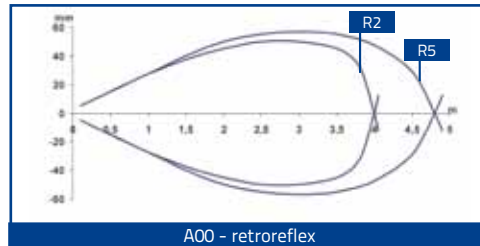
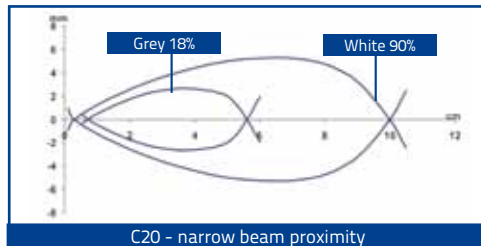
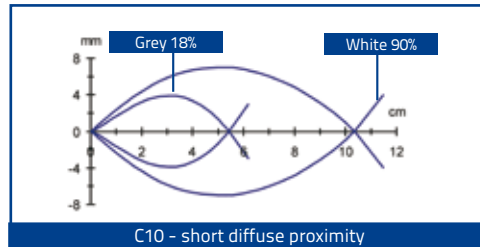
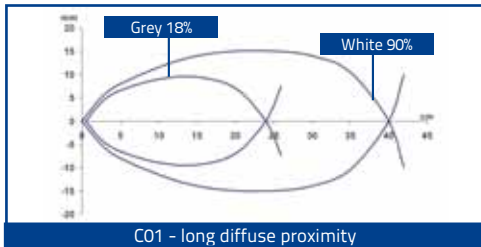


Operating distance



S51 DETECTION DIAGRAMS

M18 STANDARD



Note: the diagrams indicate the detection area typical of the axial optic versions; the maximum operating distance of the radial optic versions decreases as indicated in the tables given below

A00	3,5	4
Actual on R2		
A00	4	4,5
Actual on R3		
A00	2,5	3
Radial on R2		
A00	3	3,5
Radial on R3		

0 2,5 5 (m)

B01	2,5	3
Actual on R2		
B01	3	3,5
Actual on R3		
B01	2	2,5
Radial on R2		
B01	2,5	3
Radial on R3		

0 2 4 (m)

F/G	18	20
Actual		
F/G	15	18
Radial		

0 10 20 (m)

C01	40	55
Actual		
C01	30	35
Radial		

0 25 50 (cm)

C10/C20	10
Actual	
C10	8
Radial	

0 5 10 (cm)

Recommended operating distance
Maximum operating distance

MODEL SELECTION AND ORDER INFORMATION

S50 PLASTIC MODELS							
OPTIC FUNCTION	EMISSION	CONNECTION	OUTPUT	MODEL	ORDER No.		
Retroreflective	LED, Axial optic	2m Cable	NPN	S50-PA-2-A00-NN	952002090		
			PNP	S50-PA-2-A00-PP	952002080		
		M12 Connector	NPN	S50-PA-5-A00-NN	952002110		
			PNP	S50-PA-5-A00-PP	952002100		
Polarized retroreflective	LED, Axial optic	2m Cable	NPN	S50-PA-2-B01-NN	952001610		
			PNP	S50-PA-2-B01-PP	952001010		
		M12 Connector	NPN	S50-PA-5-B01-NN	952001500		
			PNP	S50-PA-5-B01-PP	952001020		
	LED, Radial optic	2m Cable	NPN	S50-PR-2-B01-NN	952001780		
			PNP	S50-PR-2-B01-PP	952001030		
		M12 Connector	NPN	S50-PR-5-B01-NN	952001720		
			PNP	S50-PR-5-B01-PP	952001040		
	LASER, Axial optic	2m Cable	NPN	S50-PL-2-B01-NN	952001870		
			PNP	S50-PL-2-B01-PP	952001360		
		M12 Connector	NPN	S50-PL-5-B01-NN	952001840		
			PNP	S50-PL-5-B01-PP	952001370		
LASER, Radial optic	2m Cable	NPN	S50-PH-2-B01-NN	952001950			
		PNP	S50-PH-2-B01-PP	952001940			
	M12 Connector	NPN	S50-PH-5-B01-NN	952001970			
		PNP	S50-PH-5-B01-PP	952001960			
Long Diffuse proximity	LED, Axial optic	2m Cable	NPN	S50-PA-2-C01-NN	952001620		
			PNP	S50-PA-2-C01-PP	952001050		
		M12 Connector	NPN	S50-PA-5-C01-NN	952001510		
			PNP	S50-PA-5-C01-PP	952001060		
	LED, Radial optic	2m Cable	NPN	S50-PR-2-C01-NN	952001790		
			PNP	S50-PR-2-C01-PP	952001070		
		M12 Connector	NPN	S50-PR-5-C01-NN	952001730		
			PNP	S50-PR-5-C01-PP	952001080		
	LASER, Axial optic	2m Cable	NPN	S50-PL-2-C01-NN	952001880		
			PNP	S50-PL-2-C01-PP	952001380		
		M12 Connector	NPN	S50-PL-5-C01-NN	952001850		
			PNP	S50-PL-5-C01-PP	952001390		
	LASER, Radial optic	2m Cable	NPN	S50-PH-2-C01-NN	952001990		
			PNP	S50-PH-2-C01-PP	952001980		
		M12 Connector	NPN	S50-PH-5-C01-NN	952002010		
			PNP	S50-PH-5-C01-PP	952002000		
Short Diffuse proximity	LED, Axial optic	2m Cable	NPN	S50-PA-2-C10-NN	952001630		
			PNP	S50-PA-2-C10-PP	952001240		
		M12 Connector	NPN	S50-PA-5-C10-NN	952001520		
	PNP		S50-PA-5-C10-PP	952001250			
	LED, Radial optic	2m Cable	NPN	S50-PR-2-C10-NN	952001800		
			PNP	S50-PR-2-C10-PP	952001490		
M12 Connector		NPN	S50-PR-5-C10-NN	952001740			
Medium Diffuse proximity	LED, Axial optic	2m Cable	NPN	S50-PA-2-C21-NN	952002170		
			PNP	S50-PA-2-C21-PP	952002160		
		M12 Connector	NPN	S50-PA-5-C21-NN	952002190		
			PNP	S50-PA-5-C21-PP	952002180		
		Fixed focus	LED, Axial optic	2m Cable	NPN	S50-PA-2-D00-NN	952001640
					PNP	S50-PA-2-D00-PP	952001090
M12 Connector	NPN			S50-PA-5-D00-NN	952001530		
	PNP			S50-PA-5-D00-PP	952001100		
LED, Radial optic	2m Cable	NPN	S50-PR-2-D00-NN	952001810			
		PNP	S50-PR-2-D00-PP	952001110			
	M12 Connector	NPN	S50-PR-5-D00-NN	952001750			
		PNP	S50-PR-5-D00-PP	952001120			
Fiber optic	LED, Axial optic	2m Cable	NPN	S50-PA-2-E01-NN	952001650		
			PNP	S50-PA-2-E01-PP	952001130		
		M12 Connector	NPN	S50-PA-5-E01-NN	952001540		
			PNP	S50-PA-5-E01-PP	952001140		

TUBULAR SENSORS

OPTIC FUNCTION	EMISSION	CONNECTION	OUTPUT	MODEL	ORDER No.
Through beam receiver	LED, Axial optic	2m Cable	NPN	S50-PA-2-F01-NN	952001660
			PNP	S50-PA-2-F01-PP	952001150
		M12 Connector	NPN	S50-PA-5-F01-NN	952001550
			PNP	S50-PA-5-F01-PP	952001160
	LED, Radial optic	2m Cable	NPN	S50-PR-2-F01-NN	952001820
			PNP	S50-PR-2-F01-PP	952001170
		M12 Connector	NPN	S50-PR-5-F01-NN	952001760
			PNP	S50-PR-5-F01-PP	952001180
	LASER, Axial optic	2m Cable	NPN	S50-PL-2-F01-NN	952001890
			PNP	S50-PL-2-F01-PP	952001400
		M12 Connector	NPN	S50-PL-5-F01-NN	952001860
			PNP	S50-PL-5-F01-PP	952001410
LASER, Radial optic	2m Cable	NPN	S50-PH-2-F01-NN	952002030	
		PNP	S50-PH-2-F01-PP	952002020	
	M12 Connector	NPN	S50-PH-5-F01-NN	952002050	
		PNP	S50-PH-5-F01-PP	952002040	
Through beam emitter	LED, Axial optic	2m Cable	-	S50-PA-2-G00-XG	952001190
		M12 Connector	-	S50-PA-5-G00-XG	952001200
	LED, Radial optic	2m Cable	-	S50-PR-2-G00-XG	952001210
		M12 Connector	-	S50-PR-5-G00-XG	952001220
	LASER, Axial optic	2m Cable	-	S50-PL-2-G00-XG	952001420
		M12 Connector	-	S50-PL-5-G00-XG	952001430
	LASER, Radial optic	2m Cable	-	S50-PH-2-G00-XG	952002060
		M12 Connector	-	S50-PH-5-G00-XG	952002070
Background suppression	LED, Axial optic	2m Cable	NPN	S50-PA-2-M03-NN	952001670
			PNP	S50-PA-2-M03-PP	952001230
		M12 Connector	NPN	S50-PA-5-M03-NN	952001560
			PNP	S50-PA-5-M03-PP	952001000
	LED, Radial optic	2m Cable	NPN	S50-PS-2-M03-NN	952001900
		M12 Connector	PNP	S50-PS-2-M03-PP	952001910
Retroreflective for transparent	LED, Axial optic	2m Cable	NPN	S50-PA-2-T01-NN	952001690
			PNP	S50-PA-2-T01-PP	952001260
		M12 Connector	NPN	S50-PA-5-T01-NN	952001580
			PNP	S50-PA-5-T01-PP	952001270
	LED, Radial optic	2m Cable	NPN	S50-PR-2-T01-NN	952001830
			PNP	S50-PR-2-T01-PP	952001280
		M12 Connector	NPN	S50-PR-5-T01-NN	952001770
			PNP	S50-PR-5-T01-PP	952001290
Luminescence	LED, Axial optic	2m Cable	NPN	S50-PA-2-U03-NN	952001700
			PNP	S50-PA-2-U03-PP	952001300
		M12 Connector	NPN	S50-PA-5-U03-NN	952001590
			PNP	S50-PA-5-U03-PP	952001310
Contrast	LED, Axial optic	2m Cable	NPN	S50-PA-2-W03-NN	952001710
			PNP	S50-PA-2-W03-PP	952001320
		M12 Connector	NPN	S50-PA-5-W03-NN	952001600
			PNP	S50-PA-5-W03-PP	952001330

S50 METAL MODELS					
OPTIC FUNCTION	EMISSION	CONNECTION	OUTPUT	MODEL	ORDER No.
Retroreflective	LED, Axial optic	2m Cable	NPN	S50-MA-2-A00-NN	952022090
			PNP	S50-MA-2-A00-PP	952022080
		M12 Connector	NPN	S50-MA-5-A00-NN	952022110
			PNP	S50-MA-5-A00-PP	952022100
Polarized retroreflective	LED, Axial optic	2m Cable	NPN	S50-MA-2-B01-NN	952021500
			PNP	S50-MA-2-B01-PP	952021000
		M12 Connector	NPN	S50-MA-5-B01-NN	952021660
			PNP	S50-MA-5-B01-PP	952021200
	LED, Radial optic	2m Cable	NPN	S50-MR-2-B01-NN	952021600
			PNP	S50-MR-2-B01-PP	952021140
		M12 Connector	NPN	S50-MR-5-B01-NN	952021760
			PNP	S50-MR-5-B01-PP	952021340
	LASER, Axial optic	2m Cable	NPN	S50-ML-2-B01-NN	952021820
			PNP	S50-ML-2-B01-PP	952021400
		M12 Connector	NPN	S50-ML-5-B01-NN	952021850
			PNP	S50-ML-5-B01-PP	952021440
	LASER, Radial optic	2m Cable	NPN	S50-MH-2-B01-NN	952021950
			PNP	S50-MH-2-B01-PP	952021940
		M12 Connector	NPN	S50-MH-5-B01-NN	952021970
			PNP	S50-MH-5-B01-PP	952021960
Long Diffuse proximity	LED, Axial optic	2m Cable	NPN	S50-MA-2-C01-NN	952021510
			PNP	S50-MA-2-C01-PP	952021010
		M12 Connector	NPN	S50-MA-5-C01-NN	952021670
			PNP	S50-MA-5-C01-PP	952021210
	LED, Radial optic	2m Cable	NPN	S50-MR-2-C01-NN	952021610
			PNP	S50-MR-2-C01-PP	952021150
		M12 Connector	NPN	S50-MR-5-C01-NN	952021770
			PNP	S50-MR-5-C01-PP	952021350
	LASER, Axial optic	2m Cable	NPN	S50-ML-2-C01-NN	952021830
			PNP	S50-ML-2-C01-PP	952021410
		M12 Connector	NPN	S50-ML-5-C01-NN	952021860
			PNP	S50-ML-5-C01-PP	952021450
	LASER, Radial optic	2m Cable	NPN	S50-MH-2-C01-NN	952021990
			PNP	S50-MH-2-C01-PP	952021980
		M12 Connector	NPN	S50-MH-5-C01-NN	952022010
			PNP	S50-MH-5-C01-PP	952022000
Short Diffuse proximity	LED, Axial optic	2m Cable	NPN	S50-MA-2-C10-NN	952021520
			PNP	S50-MA-2-C10-PP	952021020
		M12 Connector	NPN	S50-MA-5-C10-NN	952021680
			PNP	S50-MA-5-C10-PP	952021220
	LED, Radial optic	2m Cable	NPN	S50-MR-2-C10-NN	952021620
			PNP	S50-MR-2-C10-PP	952021490
		M12 Connector	NPN	S50-MR-5-C10-NN	952021780
			PNP	S50-MR-5-C10-PP	952021480
Medium Diffuse proximity	LED, Axial optic	2m Cable	NPN	S50-MA-2-C21-NN	952022130
			PNP	S50-MA-2-C21-PP	952022120
		M12 Connector	NPN	S50-MA-5-C21-NN	952022150
			PNP	S50-MA-5-C21-PP	952022140
Fixed focus	LED, Axial optic	2m Cable	NPN	S50-MA-2-D00-NN	952021530
			PNP	S50-MA-2-D00-PP	952021030
		M12 Connector	NPN	S50-MA-5-D00-NN	952021690
			PNP	S50-MA-5-D00-PP	952021230
	LED, Radial optic	2m Cable	NPN	S50-MR-2-D00-NN	952021630
			PNP	S50-MR-2-D00-PP	952021160
		M12 Connector	NPN	S50-MR-5-D00-NN	952021790
			PNP	S50-MR-5-D00-PP	952021360
Fiber optic	LED, Axial optic	2m Cable	NPN	S50-MA-2-E01-NN	952021880
			PNP	S50-MA-2-E01-PP	952021040
		M12 Connector	NPN	S50-MA-5-E01-NN	952021890
			PNP	S50-MA-5-E01-PP	952021240

TUBULAR SENSORS

OPTIC FUNCTION	EMISSION	CONNECTION	OUTPUT	MODEL	ORDER No.			
Through beam receiver	LED, Axial optic	2m Cable	NPN	S50-MA-2-F01-NN	952021540			
			PNP	S50-MA-2-F01-PP	952021050			
		M12 Connector	NPN	S50-MA-5-F01-NN	952021700			
			PNP	S50-MA-5-F01-PP	952021250			
	LED, Radial optic	2m Cable	NPN	S50-MR-2-F01-NN	952021640			
			PNP	S50-MR-2-F01-PP	952021170			
		M12 Connector	NPN	S50-MR-5-F01-NN	952021800			
			PNP	S50-MR-5-F01-PP	952021370			
	LASER, Axial optic	2m Cable	NPN	S50-ML-2-F01-NN	952021840			
			PNP	S50-ML-2-F01-PP	952021420			
		M12 Connector	NPN	S50-ML-5-F01-NN	952021870			
			PNP	S50-ML-5-F01-PP	952021460			
LASER, Radial optic	2m Cable	NPN	S50-MH-2-F01-NN	952022030				
		PNP	S50-MH-2-F01-PP	952022020				
	M12 Connector	NPN	S50-MH-5-F01-NN	952022050				
		PNP	S50-MH-5-F01-PP	952022040				
Through beam emitter	LED, Axial optic	2m Cable	-	S50-MA-2-G00-XG	952021060			
		M12 Connector	-	S50-MA-5-G00-XG	952021260			
	LED, Radial optic	2m Cable	-	S50-MR-2-G00-XG	952021180			
		M12 Connector	-	S50-MR-5-G00-XG	952021380			
	LASER, Axial optic	2m Cable	-	S50-ML-2-G00-XG	952021430			
		M12 Connector	-	S50-ML-5-G00-XG	952021470			
	LASER, Radial optic	2m Cable	-	S50-MH-2-G00-XG	952022060			
		M12 Connector	-	S50-MH-5-G00-XG	952022070			
Background suppression	LED, Axial optic	2m Cable	NPN	S50-MA-2-M03-NN	952021550			
			PNP	S50-MA-2-M03-PP	952021070			
	M12 Connector	PNP	S50-MA-5-M03-PP	952021270				
		LED, Radial optic	2m Cable	PNP	S50-MS-2-M03-PP	952021910		
Retroreflective for transparent	LED, Axial optic	2m Cable	NPN	S50-MA-2-T01-NN	952021570			
			PNP	S50-MA-2-T01-PP	952021090			
		M12 Connector	NPN	S50-MA-5-T01-NN	952021730			
			PNP	S50-MA-5-T01-PP	952021290			
	LED, Radial optic	2m Cable	NPN	S50-MR-2-T01-NN	952021650			
			PNP	S50-MR-2-T01-PP	952021190			
		M12 Connector	NPN	S50-MR-5-T01-NN	952021810			
			PNP	S50-MR-5-T01-PP	952021390			
			Luminescence	LED, Axial optic	M12 Connector	PNP	S50-MA-5-U03-PP	952021300
			Contrast	LED, Axial optic	2m Cable	PNP	S50-MA-2-W03-PP	952021110
M12 Connector	NPN	S50-MA-5-W03-NN			952021750			
	PNP	S50-MA-5-W03-PP			952021310			

S51 MODELS

OPTIC FUNCTION	HOUSING/OPTIC	CONNECTION	OUTPUT	MODEL	ORDER No.
Retroreflective	Nickel Plated Brass, Axial	2m Cable	NPN	S51-MA-2-A00-NK	952701601
			PNP	S51-MA-2-A00-PK	952701541
		M12 Connector	NPN	S51-MA-5-A00-NK	952701801
			PNP	S51-MA-5-A00-PK	952701531
	Nickel Plated Brass, Radial	2m Cable	NPN	S51-MR-2-A00-NK	952701711
			PNP	S51-MR-2-A00-PK	952701651
		M12 Connector	NPN	S51-MR-5-A00-NK	952701911
			PNP	S51-MR-5-A00-PK	952701851
	Plastic, Axial	2m Cable	NPN	S51-PA-2-A00-NK	952701071
			PNP	S51-PA-2-A00-PK	952701001
		M12 Connector	NPN	S51-PA-5-A00-NK	952701331
			PNP	S51-PA-5-A00-PK	952701261
	Plastic, Radial	2m Cable	NPN	S51-PR-2-A00-NK	952701201
			PNP	S51-PR-2-A00-PK	952701131
		M12 Connector	NPN	S51-PR-5-A00-NK	952701461
			PNP	S51-PR-5-A00-PK	952701391

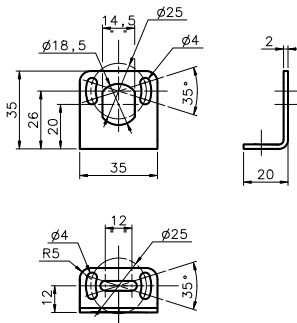
OPTIC FUNCTION	HOUSING/OPTIC	CONNECTION	OUTPUT	MODEL	ORDER No.	
Polarized retroreflective	Nickel Plated Brass, Axial	2m Cable	NPN	S51-MA-2-B01-NK	952701611	
			PNP	S51-MA-2-B01-PK	952701551	
		M12 Connector	NPN	S51-MA-5-B01-NK	952701811	
			PNP	S51-MA-5-B01-PK	952701761	
	Nickel Plated Brass, Radial	2m Cable	NPN	S51-MR-2-B01-NK	952701721	
			PNP	S51-MR-2-B01-PK	952701661	
		M12 Connector	NPN	S51-MR-5-B01-NK	952701921	
			PNP	S51-MR-5-B01-PK	952701861	
	Plastic, Axial	2m Cable	NPN	S51-PA-2-B01-NK	952701081	
			PNP	S51-PA-2-B01-PK	952701011	
		M12 Connector	NPN	S51-PA-5-B01-NK	952701341	
			PNP	S51-PA-5-B01-PK	952701271	
	Plastic, Radial	2m Cable	NPN	S51-PR-2-B01-NK	952701211	
			PNP	S51-PR-2-B01-PK	952701141	
		M12 Connector	NPN	S51-PR-5-B01-NK	952701471	
			PNP	S51-PR-5-B01-PK	952701401	
	Medium diffuse proximity	Nickel Plated Brass, Axial	2m Cable	NPN	S51-MA-2-C01-NK	952701621
				PNP	S51-MA-2-C01-PK	952701561
M12 Connector			NPN	S51-MA-5-C01-NK	952701821	
			PNP	S51-MA-5-C01-PK	952701771	
Nickel Plated Brass, Radial		2m Cable	NPN	S51-MR-2-C01-NK	952701731	
			PNP	S51-MR-2-C01-PK	952701671	
		M12 Connector	NPN	S51-MR-5-C01-NK	952701931	
			PNP	S51-MR-5-C01-PK	952701871	
Plastic, Axial		2m Cable	NPN	S51-PA-2-C01-NK	952701091	
			PNP	S51-PA-2-C01-PK	952701021	
		M12 Connector	NPN	S51-PA-5-C01-NK	952701351	
			PNP	S51-PA-5-C01-PK	952701281	
Plastic, Radial		2m Cable	NPN	S51-PR-2-C01-NK	952701221	
			PNP	S51-PR-2-C01-PK	952701151	
		M12 Connector	NPN	S51-PR-5-C01-NK	952701481	
			PNP	S51-PR-5-C01-PK	952701411	
Short diffuse proximity		Nickel Plated Brass, Axial	2m Cable	NPN	S51-MA-2-C10-NK	952701631
				PNP	S51-MA-2-C10-PK	952701571
			M12 Connector	NPN	S51-MA-5-C10-NK	952701831
				PNP	S51-MA-5-C10-PK	952701521
		Nickel Plated Brass, Radial	2m Cable	NPN	S51-MR-2-C10-NK	952701741
				PNP	S51-MR-2-C10-PK	952701681
			M12 Connector	NPN	S51-MR-5-C10-NK	952701941
				PNP	S51-MR-5-C10-PK	952701881
	Plastic, Axial	2m Cable	NPN	S51-PA-2-C10-NK	952701101	
			PNP	S51-PA-2-C10-PK	952701031	
		M12 Connector	NPN	S51-PA-5-C10-NK	952701361	
			PNP	S51-PA-5-C10-PK	952701291	
	Plastic, Radial	2m Cable	NPN	S51-PR-2-C10-NK	952701231	
			PNP	S51-PR-2-C10-PK	952701161	
		M12 Connector	NPN	S51-PR-5-C10-NK	952701491	
			PNP	S51-PR-5-C10-PK	952701421	
	Narrow beam proximity	Nickel Plated Brass, Axial	M12 Connector	PNP	S51-MA-5-C20-PK	952701961
	Through beam receiver	Nickel Plated Brass, Axial	2m Cable	NPN	S51-MA-2-F00-NK	952701641
				PNP	S51-MA-2-F00-PK	952701581
			M12 Connector	NPN	S51-MA-5-F00-NK	952701841
				PNP	S51-MA-5-F00-PK	952701781
		Nickel Plated Brass, Radial	2m Cable	NPN	S51-MR-2-F00-NK	952701751
				PNP	S51-MR-2-F00-PK	952701691
			M12 Connector	NPN	S51-MR-5-F00-NK	952701951
PNP				S51-MR-5-F00-PK	952701891	
Plastic, Axial		2m Cable	NPN	S51-PA-2-F00-NK	952701121	
			PNP	S51-PA-2-F00-PK	952701051	
		M12 Connector	NPN	S51-PA-5-F00-NK	952701381	
			PNP	S51-PA-5-F00-PK	952701311	
Plastic, Radial		2m Cable	NPN	S51-PR-2-F00-NK	952701251	
			PNP	S51-PR-2-F00-PK	952701181	
		M12 Connector	NPN	S51-PR-5-F00-NK	952701511	
			PNP	S51-PR-5-F00-PK	952701441	
Through beam emitter	Nickel Plated Brass, Axial	2m Cable	-	S51-MA-2-G00-XG	952701591	
		M12 Connector	-	S51-MA-5-G00-XG	952701791	
	Nickel Plated Brass, Radial	2m Cable	-	S51-MR-2-G00-XG	952701701	
		M12 Connector	-	S51-MR-5-G00-XG	952701901	
	Plastic, Axial	2m Cable	-	S51-PA-2-G00-XG	952701061	
		M12 Connector	-	S51-PA-5-G00-XG	952701321	
	Plastic, Radial	2m Cable	-	S51-PR-2-G00-XG	952701191	
		M12 Connector	-	S51-PR-5-G00-XG	952701451	

TUBULAR SENSORS

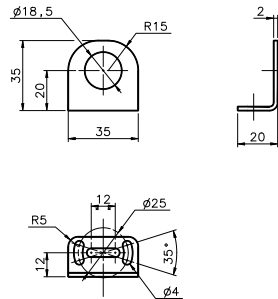
S50/S51

ACCESSORIES

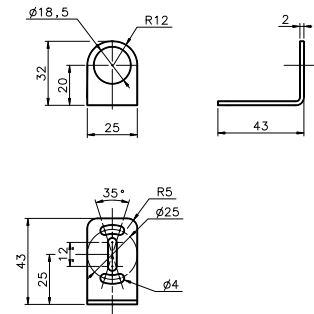
ST-5010



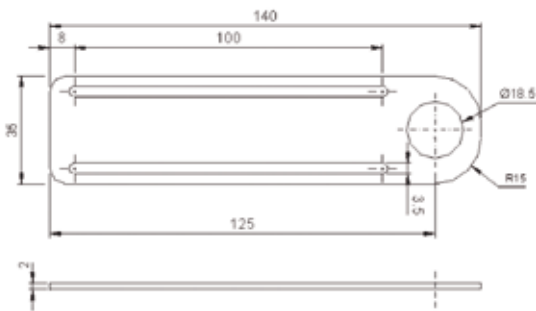
ST-5011



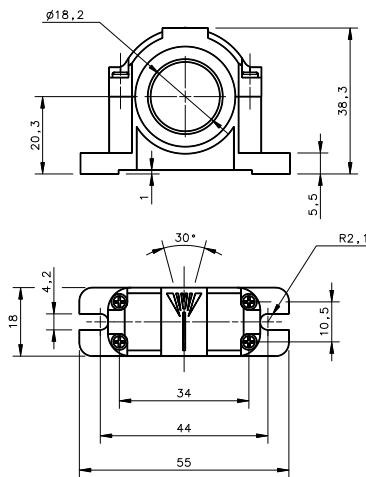
ST-5012



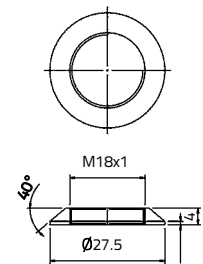
ST-5017



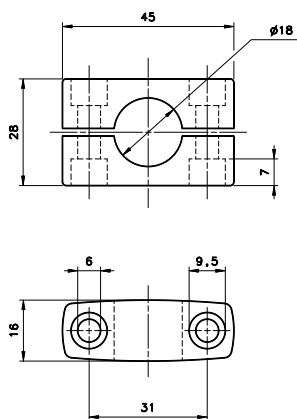
SWING-18



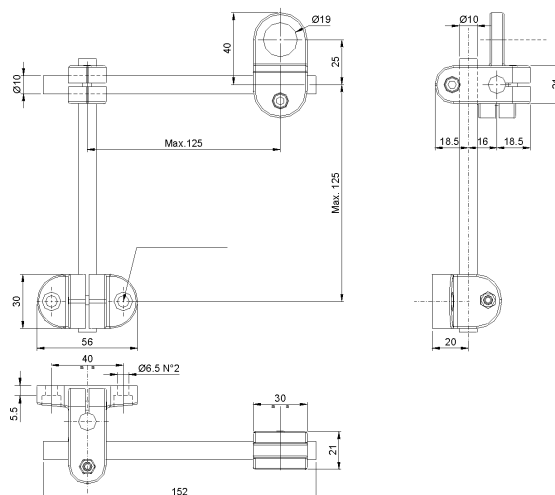
PLASTIC NUT



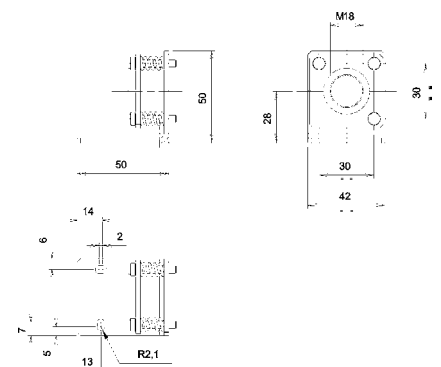
SP-40



JOINT 18



MICRO 18



mm

MODEL	DESCRIPTION	ORDER No.
ST-5010	M18/14 mounting bracket	95ACC5230
ST-5011	M18 mounting bracket short	95ACC5240
ST-5012	M18 mounting bracket long	95ACC5250
ST-5017	M18 mounting bracket	95ACC5270
S50 EASY -IN	M18/14 EASY in™ adjustable mounting support	95ACC 5300
JOINT -18	M18 jointed support	95ACC 5220
MICRO -18	support with micrometric regulation for tubular M18 sensors	95ACC 1380
ST1218	M12/M18 mounting brackets	95ACC3340
ST1830	M18/M30 mounting brackets	95ACC3350
SP-40	mounting bracket tubular	95ACC1370
SWING-18	adjustable support for M18 tubular sensors	895000006
PLASTIC NUT	flared mounting nut	95ACC2630
MEK -PROOF	front protection (only for metal models)	G5000001

CABLES

TYPE	DESCRIPTION	LENGTH	MODEL	ORDER No.
Axial M12 Connector	4-pole, grey, P.V.C.	3 m	CS-A1-02-G-03	95A251380
		5 m	CS-A1-02-G-05	95A251270
		7 m	CS-A1-02-G-07	95A251280
		10 m	CS-A1-02-G-10	95A251390
Radial M12 Connector	4-pole, P.U.R.	2 m	CS-A1-02-R-02	95A251540
		5 m	CS-A1-02-R-05	95A251560
		10 m	CS-A1-02-R-10	95A251560
Radial M12 Connector	4-pole, grey, P.V.C.	3 m	CS-A2-02-G-03	95A251360
		5 m	CS-A2-02-G-05	95A251240
		7 m	CS-A2-02-G-07	95A251245
		10 m	CS-A2-02-G-10	95A251260
Radial M12 Connector with LED (for PNP N.O. sensors)	4-pole, P.U.R.	2 m	CS-A2-02-R-02	95A251550
		5 m	CS-A2-02-R-05	95A251570
Radial M12 Connector with LED (for PNP N.O. sensors)	4-pole, grey, P.V.C.	3 m	CS-A2-12-G-03	95A251400
		5 m	CS-A2-12-G-05	95A251350
		10 m	CS-A2-12-G-10	95A251370
Axial M12 Connector	4-pole, shielded, black, P.V.C.	3 m	CV-A1-22-B-03	95ACC1480
		5 m	CV-A1-22-B-05	95ACC1490
		10 m	CV-A1-22-B-10	95ACC1500
		15 m	CV-A1-22-B-15	95ACC2070
		25 m	CV-A1-22-B-25	95ACC2090
Radial M12 Connector	4-pole, shielded, black, P.V.C.	3 m	CV-A2-22-B-03	95ACC1540
		5 m	CV-A2-22-B-05	95ACC1550
		10 m	CV-A2-22-B-10	95ACC1560
Axial M12 Connector	4-pole, U.L., black, P.V.C.	3 m	CS-A1-02-U-03	95ASE1120
		5 m	CS-A1-02-U-05	95ASE1130
		10 m	CS-A1-02-U-10	95ASE1140
		15 m	CS-A1-02-U-15	95ASE1150
		25 m	CS-A1-02-U-25	95ASE1160
Radial M12 Connector	4-pole, black	Connector- not cabled	CS-A1-02-B-NC	G5085002
		Connector- not cabled	CS-A2-02-B-NC	G5085003